

Cumulative Impact policy
Police incident data Nov 13 – May 17

Data

- Data from Victoria McIntee – Suffolk constabulary

- Data set

Variables include:

-Location street name: Abbeygate, Angel, Bridewell, College, Crown, Guildhall, Risbygate, St. Andrews, Westgate and Whiting

-Date/time

-Event type: ASB, Crime, Public Safety, Transport

-data broken into key time categories: 05:00-19:00 day time, 00:00-04:00 late evening and 19:00-00:00/04:00-05:00 evening/early morning

Data set: Nov 13 – April 17 = 2102 records

Latest year of data : May 16 – Apr 17 = 608 records

When do incidents occur during a 24 hr period? Data from Nov 13 – April 17

Incident type	24 hr period	day time 05:00-19:00	evening 19:00-05:00	19:00-00:00/04:00-05:00 - evening/early morning	00:00-04:00 - late evening
ASB	345	175	170	98	72
Crime	519	270	249	106	143
Public Safety	902	506	396	244	152
Transport	336	262	74	61	13
All incidents	2102	1213	889	509	380

Of the 2102 incidents that occurred from Nov 13 – April 17, 1213 [58%] occurred during the daytime [05:00-19:00] and 889 [42%] occurred during the evening [19:00-05:00]

This changes slightly over time with 40% of crime occurring in the evening in May 16 – April 17, compared to 44% in April 14- May 15.

The 'evening' can be split into two distinct time periods; between 00:00-04:00 [late night] and outside of this time [from 19:00-00:00 and then 04:00-05:00]

Approximately 18% of all crime occurred between the hours of 00:00-04:00 of which 40% related to Public Safety, 38% to Crime, 19% to ASB and 3% to Transport related incidents.

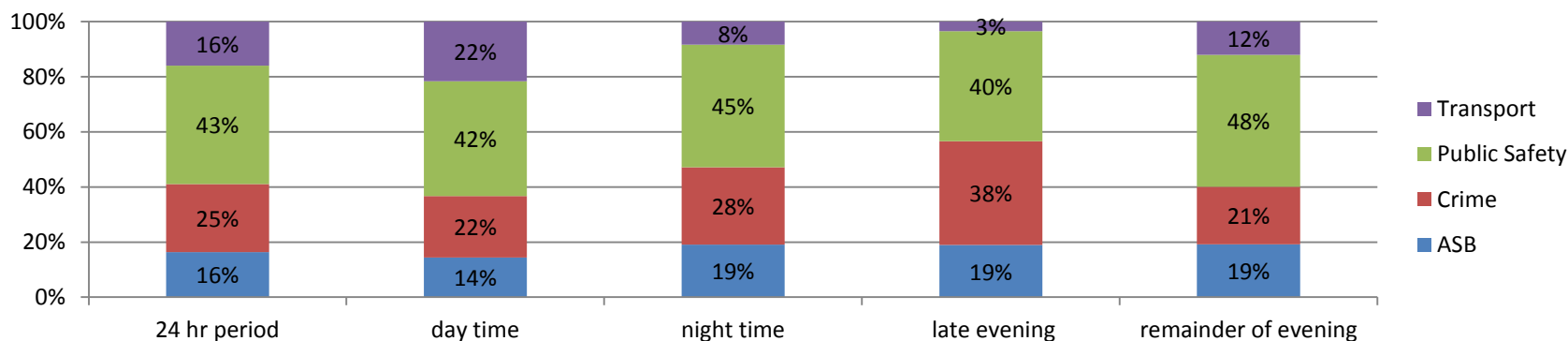
Percentage of incidents that occur during the daytime and evening, year on year			
Time period	05:00-19:00 - day time	19:00-05:00 - night time	00:00-04:00 - late evening
May 2014- April 2015	55.9%	44.1%	19.3%
May 2015- April 2016	56.1%	43.9%	18.3%
May 2016- April 2017	59.7%	40.3%	18.1%
all data	57.7%	42.3%	18.1%

What type of incidents occur during a 24 hour time period?

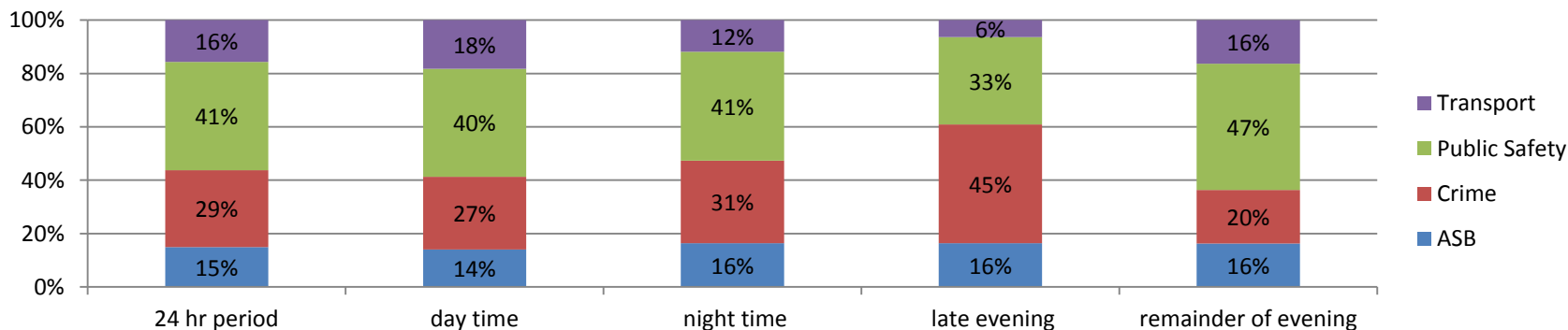
From day time to evening we see an increase in incidents relating to Public Safety, Crime and ASB and a reduction in Transport related incidents.

As we progress into the later evening [00:00-04:00] we see a further increase in Crime incidents. In the earlier evening, 21% of incidents are crime related, but this rises to 38% of all incidents in the late evening. This increase is more pronounced in the latest year of data [16/17] with crime related incidents representing 45% of all incidents in the late evening.

The proportion of incident type throughout a 24 hour time period : Nov 13 - April 17

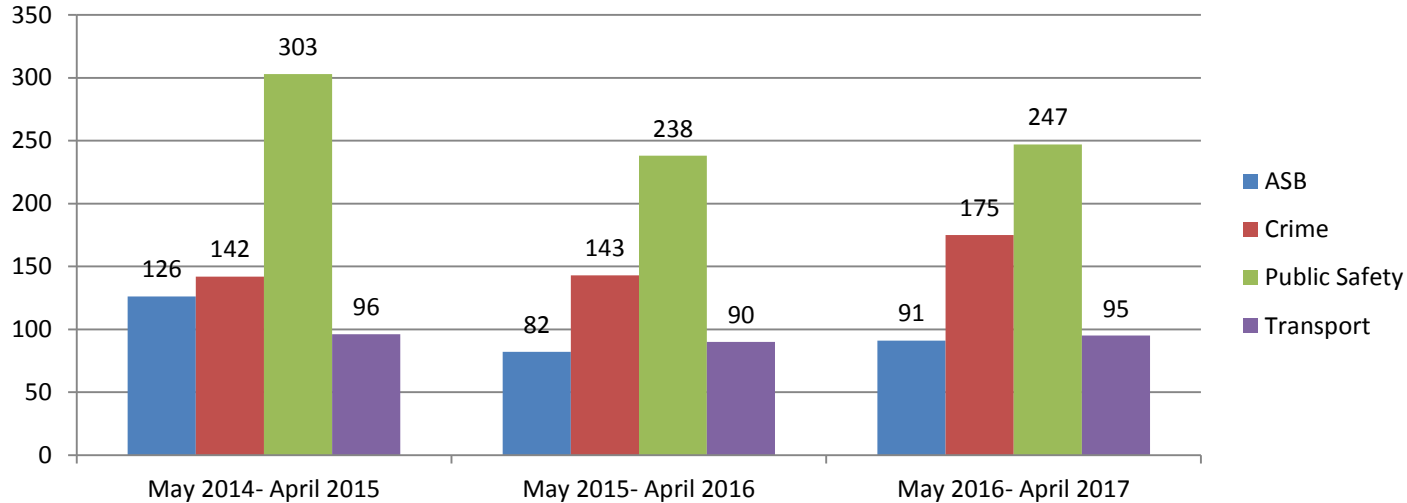


**The proportion of incident type throughout a 24 hour time period:
May 16 - April 17**

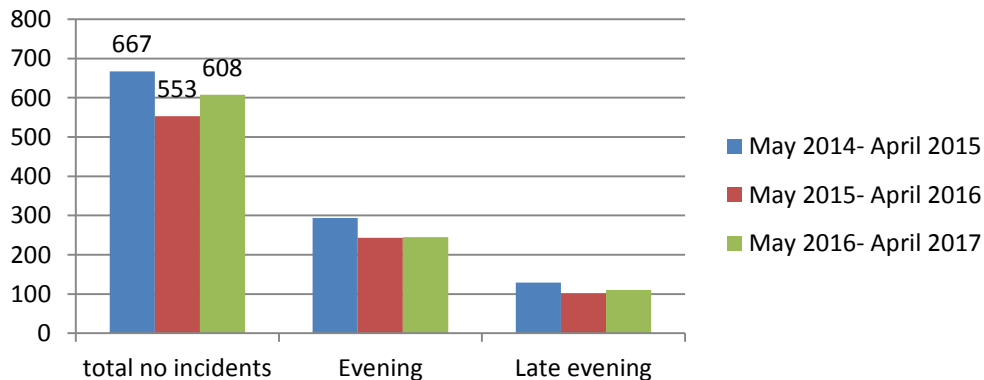


Have the number and type of incidents increased over time?

Number and type of incidents year on year



Number of incidents from 2014/15 - 2016/17 and time of incidents



Crime is the only incident type to have increased from 2014/15 to 2016/17:
142 incidents in 2014/15
143 incidents in 2015/16
175 incidents in 2016/17

The number of overall incidents have dropped from 14/15 into 15/16 to rise again in 16/17 but the overall number of incidents in 16/17 remain below those for 14/15.

Incidents by type – 2016/17

May 2016- April 2017	Incidents by type and time of day				
Incident type	24 hr period	Day time 05:00-19:00	Evening 19:00-05:00	00:00-04:00 late evening	Remainder of evening 19:00-00:00 / 04:00-05:00
ASB	91	51	40	18	22
Crime	175	99	76	49	27
Public Safety	247	147	100	36	64
Transport	95	66	29	7	22
Grand Total	608	363	245	110	135

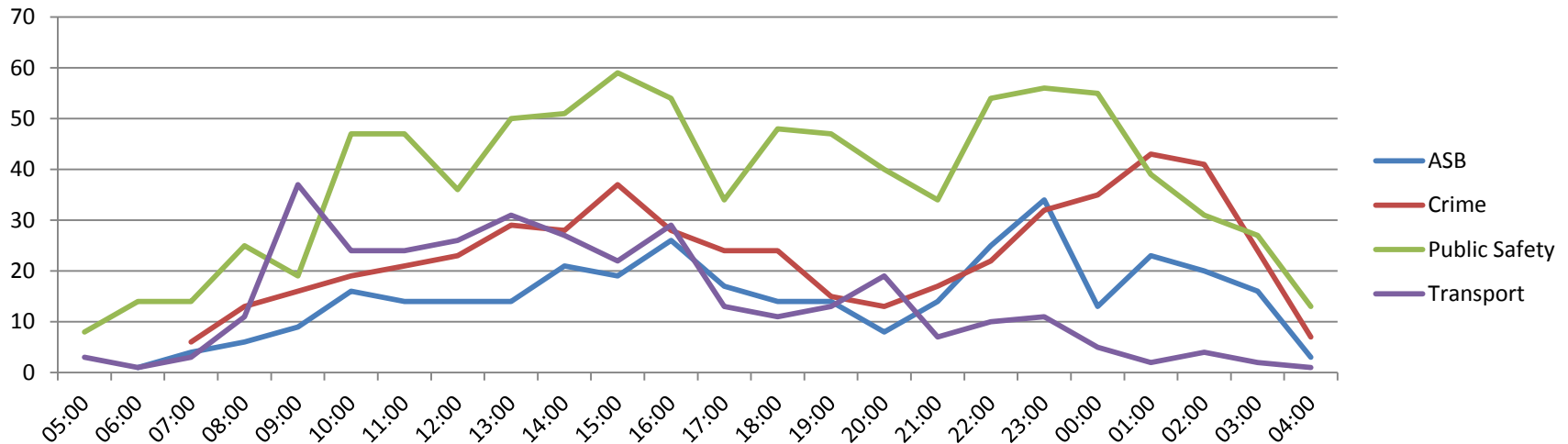
41% of all incidents relate to Public Safety and 60% of these occur during the day time. Of the 100 incidents that occur during the evening, 64% occur in the earlier evening.

29% of all incidents relate to Crime and 57% of these occur during the daytime. However of the 76 incidents that occur in the evening, 64% occur in the late evening

Of the ASB related incidents in the evening, just over half [55%] occur in the earlier evening. 45% occur in the late evening

How incidents change as the day progresses

Timeline of number of incidents within a day -
dataset from Nov 2013 - April 2017



The number of Transport related incidents fall as we move into the evening, however ASB and Public Safety incidents climb steadily from 20:00 until about 23:00- midnight before falling away. Crime related incidents increase from 19:00 to a peak at 01:00-02:00.

Public Safety and ASB related incidents peak earlier in the evening at around 23:00 with a lag of approx. 2 hours before we see the peak for Crime related incidents

In the early evening/very early morning [19:00-00:00/04:00-05:00] 47% of all incidents relate to Public Safety, however in the late evening [0:00-04:00] 45% of incidents relate to Crime [2016/17 data].

Where do incidents occur?

Street	No. of incidents			
	24 hr period	evening 19:00-05:00	daytime 05:00-19:00	late evening 00:00-04:00
ABBEYGATE	71	28	43	4
ANGEL	78	20	58	8
RISBYGATE	98	30	68	13
ST. ANDREWS	190	90	100	58
WESTGATE	66	39	27	13
OTHER STREETS X 5	105	38	67	14
	608	245	363	110

Five of the ten streets see over 80% of the incidents [2016/17]

Over 50% of the incidents that occur in the late evening are in St Andrews street.

In Westgate we see a rise in the proportion of crimes that occur in the evening – only 7% of incidents occur here during the day compared with 16% in the evening.

Street	% of incidents			
	24 hr period	evening 19:00-05:00	daytime 05:00-19:00	late evening 00:00-04:00
ABBEYGATE	12%	11%	12%	4%
ANGEL	13%	8%	16%	7%
RISBYGATE	16%	12%	19%	12%
ST. ANDREWS	31%	37%	28%	53%
WESTGATE	11%	16%	7%	12%
OTHER STREETS X 5	17%	16%	18%	13%

Percentage of incidents by location - evening time and late evening

Incidents by location in the evening and the late evening										
	Evening 19:00 - 05:00					Late evening 00:00 - 04:00				
	%					%				
	No. incidents	ASB	Crime	Public Safety	Transport	No. incidents	ASB	Crime	Public Safety	Transport
ABBEYGATE	28 [11%]	4%	43%	43%	11%	4 [4%]	0%	100%	0%	0%
ANGEL	20 [8%]	10%	15%	50%	25%	8 [7%]	0%	25%	38%	38%
RISBYGATE	30 [12%]	13%	27%	43%	17%	13 [12%]	8%	38%	46%	8%
ST. ANDREWS	90 [37%]	24%	42%	27%	7%	58 [53%]	24%	52%	21%	3%
WESTGATE	39 [16%]	10%	18%	67%	5%	13 [12%]	8%	23%	62%	8%
OTHER STREETS X 5	38 [16%]	18%	21%	39%	21%	14 [13%]	14%	36%	50%	0%
	245					110				

245 incidents occur during the evening and 110 of these occur in the late evening [00:00-04:00]

Different streets/locations experience different incident types.

Of the incidents in Abbeygate, 43% relate to Crime and another 43% relate to Public Safety, however the number of incidents dramatically falls in the late evening but these all relate to Crime incidents.

50% of incidents in Angel in the evening are Crime related and this falls to 25% in the late evening.

Westgate sees relatively little Crime and ASB incidents but over 60% of incidents are Public Safety related [both in the evening and late evening].

By comparison St. Andrews has more Crime related incidents than Public Safety incidents. St. Andrews experiences most of the overall incidents; 37% of all incidents during the early evening and this rises to 53% of all incidents in the late evening.